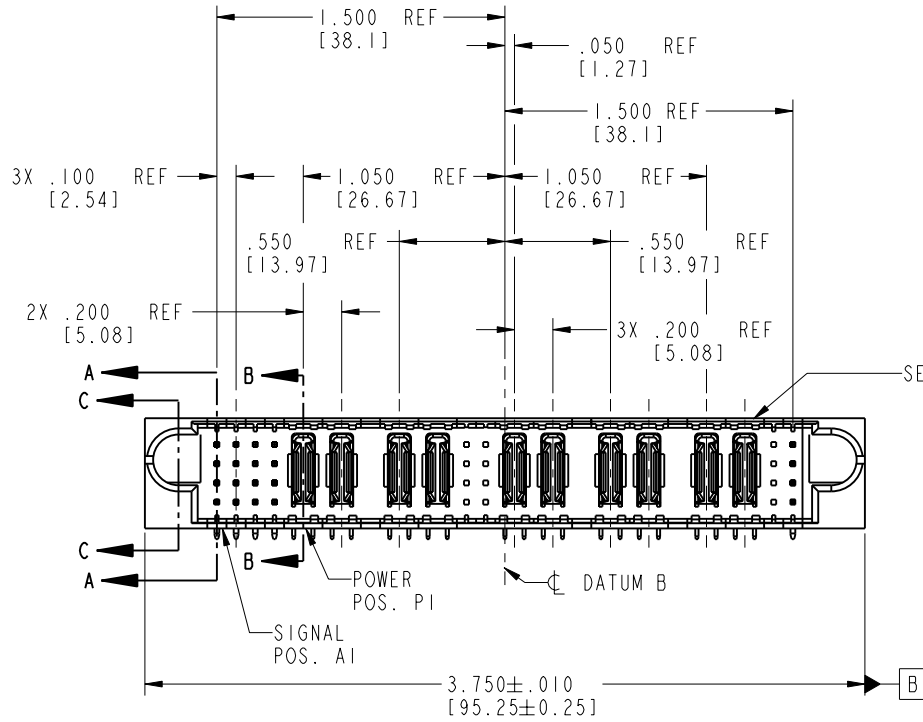


Tous droits strictement réservés. Reproduction ou communication o des liens interdite sous quelque forme que ce soit sans autorisation écrite du propriétaire. Propriété de c FCI. Droits de reproduction FCI.

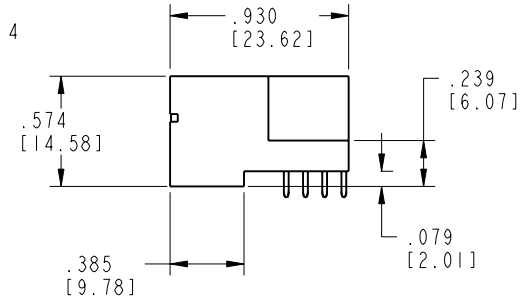
FCI

All rights strictly reserved. Reproduction or issue to third parties in any form whomever is not permitted without written authority from the proprietor. Property of FCI. Copyright FCI.

PRODUCT NO.	ROWS	SIG				POWER				POWER				SIG							
		E1	1	2	3	4	P1	P2	P3	P4	5	6	P5	P6	P7	P8	P9	P10	7	8	E2
51939-005-- NOTE: (3)	D C B A	U U U U	T T T T	S S S S	R R R R	PA	PA	PA	PA	X X	X X	X X	X X	PA	PA	PA	PA	PA	PA	X X	H T S R



SEE NOTE 4



CODE	DIM "M" MATING LENGTH	CONTACT TYPE
H	.220 [5.59]	SIGNAL
R	.270 [6.86]	SIGNAL
S	.270 [6.86]	SIGNAL
T	.270 [6.86]	SIGNAL
U	.270 [6.86]	SIGNAL
PA	N/A [N/A]	POWER
X	OMITTED	OMITTED

mat'l code				SEE NOTE 2		tolerances unless otherwise specified		CUSTOMER		FCI www.fciconnect.com	
ltr	ecr no.	dr	date	linear	.XX±.01/0.X±0.3		COPY		title 16S + 4P + 8S + 6P + 8S RIGHT ANGLE SPECIAL HEADER		
H	DG05-0258	SJ	07/29/05		.XXX±.005/0.XX±0.13		projection		product family PwrBlade code 213		
J	DG06-0008	JMG	01/07/06	angles	.XXX±.0020/0.XXX±0.051		INCH/MM		size dwg no A 51939-005 sheet 1 of 4		
					dr	D. INGRAM	01/08/02	scale 1:1			
				engr	J. ALLISON	01/08/02					
				chr	J. ALLISON	01/08/02					
				appd	J. ALLISON	01/08/02					
sheet index	revision sheet	J 1	J 2	J 3	J 4						

cage code 22526

Pro/E

PDM: Rev:J

STATUS: Released

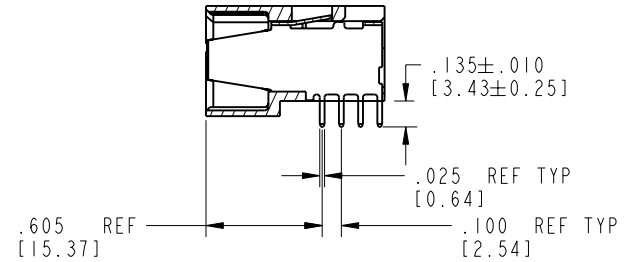
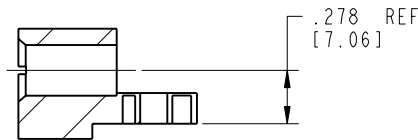
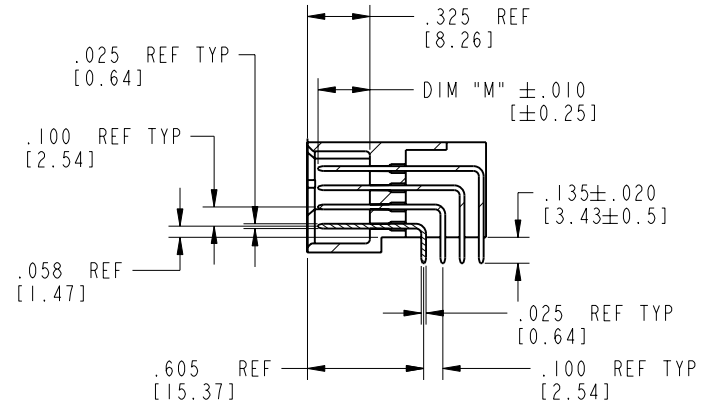
Printed: Aug 15, 2007

Tous droits strictement reserves. Reproduction ou communication o des liers interdite sous quelque forme que ce soit sans autorisation ecrite du proprietaire. Propriete de c FCI. Droits de reproduction FCI.

FCI

All rights strictly reserved. Reproduction or issue to third parties in any form whatever is not permitted without written authority from the proprietor. Property of FCI. Copyright FCI.

PRODUCT NUMBER
51939-005--
NOTE: (3)



mat'l code				SEE NOTE 2		tolerances unless otherwise specified		CUSTOMER		FCI www.fciconnect.com		
lfr	ecn no.	dr	date	linear	.XX±.01/0.X±0.3		COPY		title	16S + 4P + 8S + 6P + 8S		
J					.XXX±.005/0.XXX±0.13		projection			RIGHT ANGLE SPECIAL HEADER		
				angles	.XXX±.0020/0.XXX±0.051		INCH/MM		product family	PwrBlade		
					0° ± 2°		scale			size	dwg no	code
				dr	D. INGRAM	01/08/02	1:1		A			213
				enr	J. ALLISON	01/08/02			51939-005		sheet	
				chr	J. ALLISON	01/08/02					2 of 4	
				appd	J. ALLISON	01/08/02						
sheet index	revision sheet											

cage code 22526

Pro/E

PDM: Rev:J

STATUS: Released

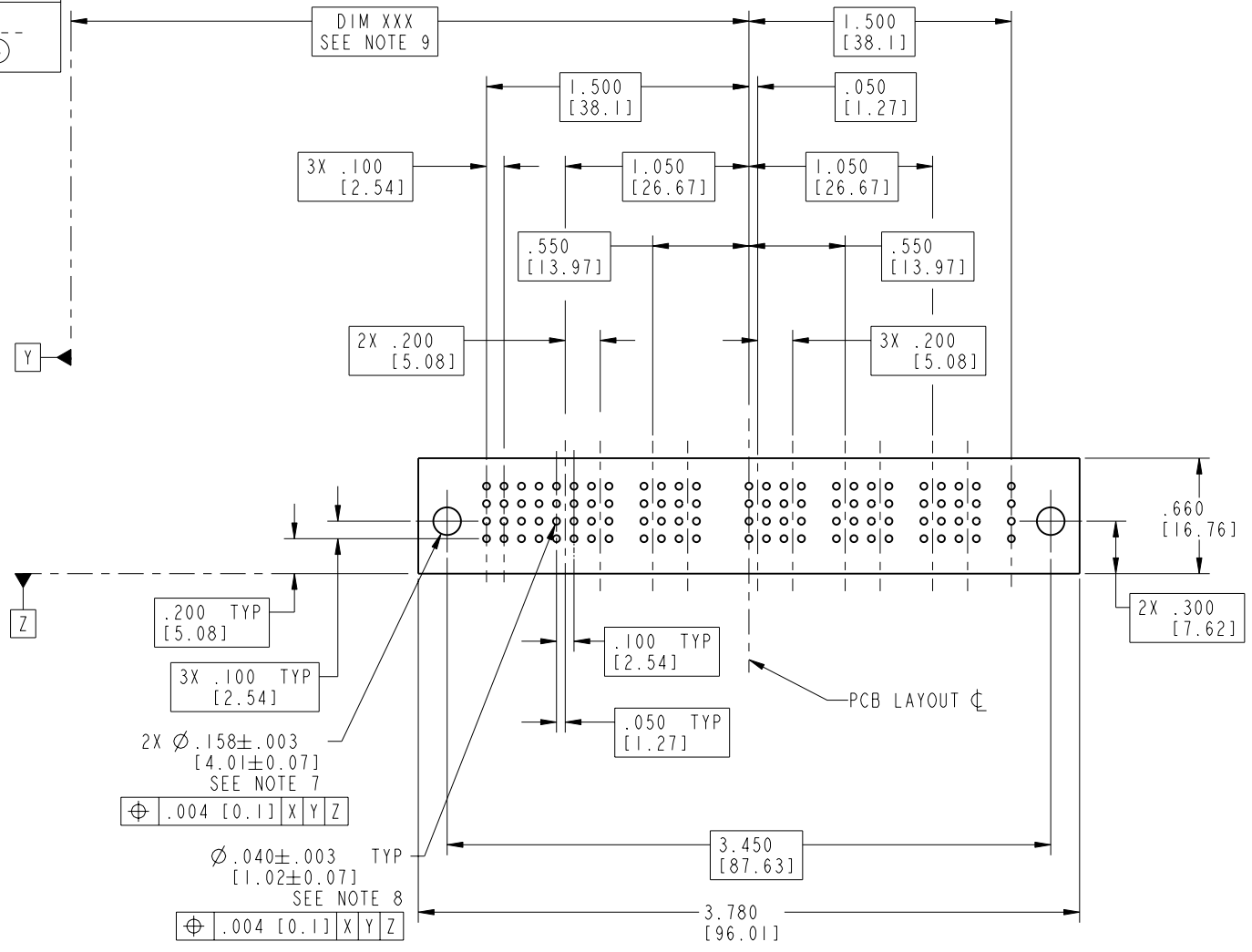
Printed: Aug 15, 2007

Tous droits strictement réservés. Reproduction ou communication o des liens interdite sous quelque forme que ce soit sans autorisation écrite du propriétaire. Propriété de c FCI. Droits de reproduction FCI.

All rights strictly reserved. Reproduction or issue to third parties in any form, whatever is not permitted without written authority from the proprietor. Property of FCI. Copyright FCI.



PRODUCT NUMBER
51939-005--
NOTE: ③



RECOMMENDED PCB LAYOUT

mat'l code				SEE NOTE 2		tolerances unless otherwise specified		CUSTOMER		 www.fciconnect.com	
lfr	ecr no.	dr	date	linear	.XX±.01/0.X±0.3	projection		COPY		title	
J				angles	.XXX±.005/0.XX±0.13					16S + 4P + 8S + 6P + 8S RIGHT ANGLE SPECIAL HEADER	
				dr	.XXX±.0020/0.XXX±0.051	INCH/MM		product family		code	
				engr	0° ± 2°	scale		PwrBlade		213	
				chr		1:1		size		sheet	
				appd				A		3 of 4	
sheet index		revision sheet		D. INGRAM 01/08/02				51939-005			
				J. ALLISON 01/08/02							
				J. ALLISON 01/08/02							
				J. ALLISON 01/08/02							

cage code 22526

Pro/E

PDM: Rev:J

STATUS: Released

Printed: Aug 15, 2007

Tous droits strictement réservés. Reproduction ou communication o des liers interdite sous quelque forme que ce soit sans autorisation écrite du propriétaire. Propriete de c FCI. Droits de reproduction FCI.



All rights strictly reserved. Reproduction or issue to third parties in any form, whatever is not permitted without written authority from the proprietor. Property of FCI. Copyright FCI.

PRODUCT NUMBER

51939-005--
NOTE: ③

NOTES:

- DIMENSIONS AND TOLERANCES ARE IN ACCORDANCE WITH ASME Y14.5M, 1994 UNLESS OTHERWISE SPECIFIED.
- CONNECTORS NOTES:
2. HOUSING MATERIAL: UL 94 V-0 GLASS FILLED HIGH TEMP THERMO PLASTIC
POWER CONTACT MATERIAL: COPPER ALLOY
SIGNAL PIN MATERIAL: COPPER ALLOY
- 51939-005;51939-005LF;51939-005GLF PLATING SPEC. SEE PRINT:10064183
- "MANUFACTURER" NAME, P/N, AND DATE CODE TO APPEAR ON THIS SURFACE.
- PRODUCT SPECIFICATION GS-12-149.
- PCB - NOTES:
6. ALL HOLE DIAMETERS ARE FINISHED HOLE SIZE.
- HOLD DOWN THROUGH HOLES ARE UNPLATED.
- $\varnothing .0453 \pm 0.0010$ [1.151 ± 0.025] DRILLED HOLES PLATED WITH 0.0003 [0.008] MIN SnPb OVER $.001$ [0.03] TO $.003$ [0.08] Cu PLATING TO ACHIEVE $\varnothing .040 \pm .003$ [$1.02 \pm .07$] HOLE.
- "DIM XXX" TO BE DETERMINED BY THE CUSTOMER.

mat'l code		SEE NOTE 2		tolerances unless otherwise specified		CUSTOMER		www.fciconnect.com	
lfr	ecr no.	dr	date	linear	.XX±.01/0.X±0.3	COPY			
J				projection	.XXX±.005/0.XX±0.13			title 16S + 4P + 8S + 6P + 8S RIGHT ANGLE SPECIAL HEADER	
				angles	.XXX±.0020/0.XXX±0.051			product family PwrBlade code 213	
				dr	D. INGRAM 01/08/02	INCH/MM		size dwg no	
				engr	J. ALLISON 01/08/02	scale 1:1		A 51939-005	
				chr	J. ALLISON 01/08/02			sheet 4 of 4	
				appd	J. ALLISON 01/08/02				
sheet index	revision sheet								

cage code 22526

Pro/E

PDM: Rev:J

STATUS: Released

Printed: Aug 15, 2007